

## Answer Key

# Chapter 9 QUIZ



## QUIZ INSTRUCTIONS TO STUDENTS -

For answers that require names of notes (letters) or scale degrees (numbers), use the symbols “**#**” or “**b**” when necessary, NOT the words “sharp” or “flat.”

10 pts

- 1.** Answer questions about the following melodies ( **A** through **E** ). Answer with correct letter.

Which has the narrowest range?

Which has the widest range?

Which is the best example of descending contour?

Which has all stepwise motion?

Which has the most leaps?

**A.**



**B.**



C.



D.



E.



8 pts

2. In the following melody, which of these melodic traits make the chorus different from the verse:

( Answer "yes" or "no" for each trait )

☐

Phrase length

☐

Melodic range

☐

Variety of pitches

☐

Contour



VERSE



CHORUS

10 pts

3. Which of these melodic traits is found in the following melody. ( Answer "yes" or "no" for each trait )

☐

Narrow melodic range

☐

Numerous dramatic leaps

☐

Ascending contour

☐

Small number of pitches

Overall, is this melody weak or strong ?

☐

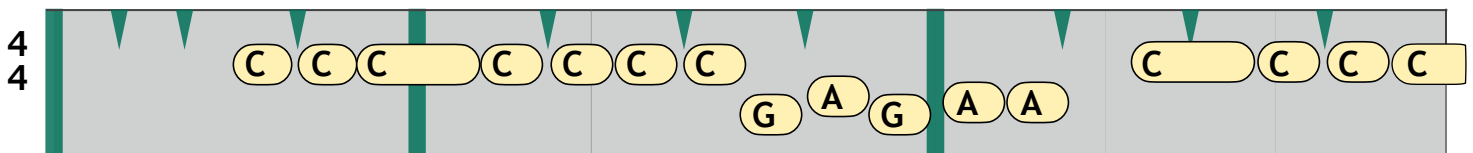
For AUDIO, see the Ch. 9 Quiz Playlist, track 1. To navigate within the audio track, first click on the song title, then slide the progress bar forward to **0:25**.

**"South's Gonna Do It Again" - Charlie Daniels Band - 1975**

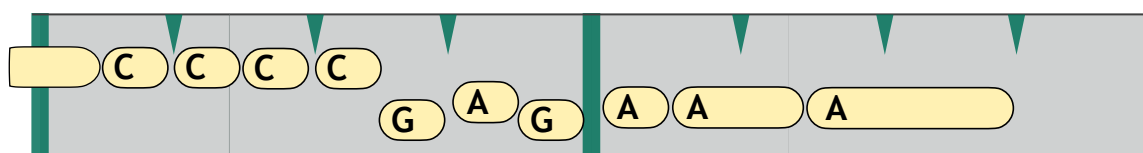
A blues

Tr. 1

START LISTENING AT **0:25**



**0:25** Well the train to Grinder-switch . . . . .



. . . . . down in Car - o line

10 pts

4. Which of these melodic traits is found in the following melody. ( Answer "yes" or "no" for each trait )

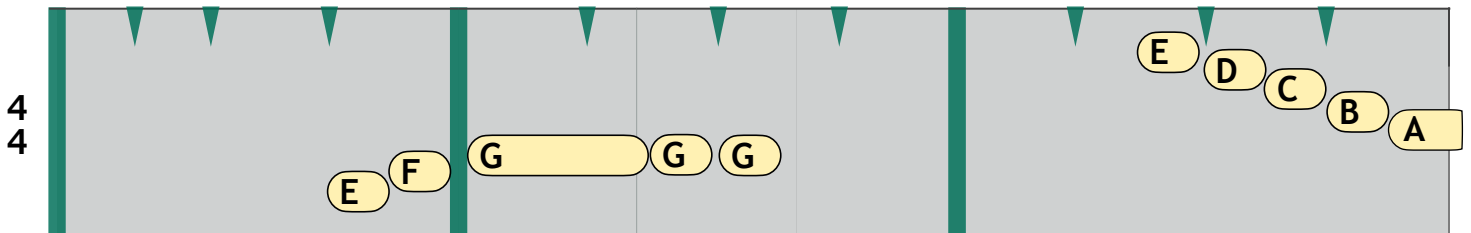
- ☐ Wide melodic range
- ☐ Dramatic leaps
- ☐ Flat contour
- ☐ Large number of pitches

Overall, is this melody weak or strong ?

**"There's a Kind of a Hush" - Herman's Hermits - 1967**

C major

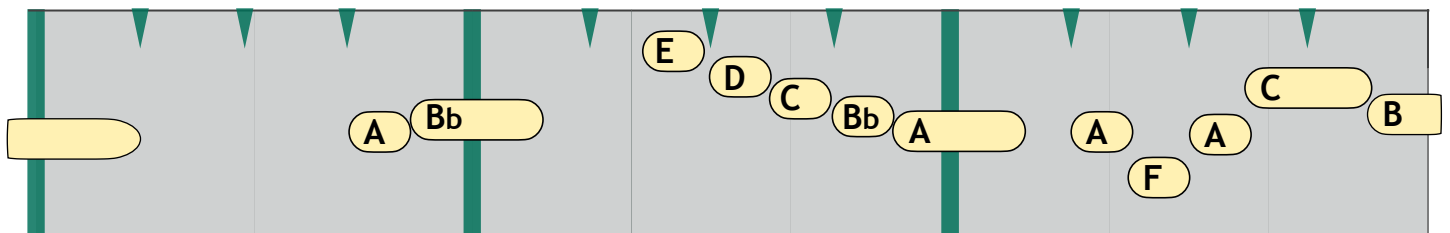
Tr. 2



0:07

There's a kind \_\_\_\_ of hush ..

.....



.....

.....

..... you can hear the sound

10 pts

5. Which of these melodic traits is found in the following melody. ( Answer "yes" or "no" for each trait )

☐

Dramatic leaps

☐

Small number of pitches

☐

Use of sequences

☐

Wide melodic range

Overall, is this melody weak or strong ?

☐

**"Just Give Me a Reason" - Pink feat. Nate Ruess - 2012**

G major

Tr. 3

START LISTENING AT **0:50**

4  
4

G G E E B B G G F# F# D D A F# F#

Just give me a rea - son . . . . .

**0:50 CHORUS**

E E E E E D C D B B A G F# E

. . . . . we can learn to love a -

10 pts

6. Which of these melodic traits is found in the following melody. ( Answer "yes" or "no" for each trait )

☐

Descending contour

☐

Variety of phrase lengths

☐

Small number of pitches

☐

Narrow melodic range

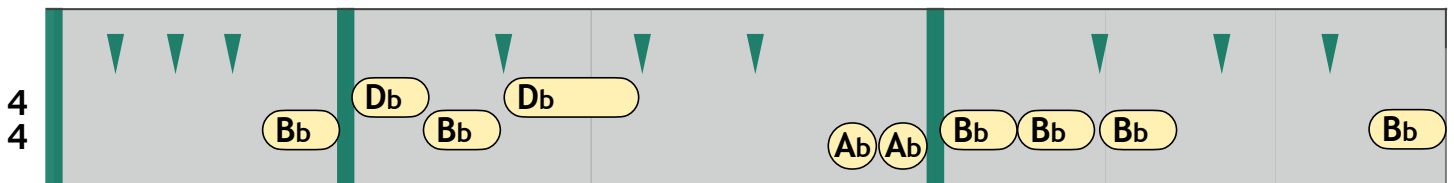
Overall, is this melody weak or strong ?

**"Bad" – Michael Jackson – 1987**

Bb dorian

Tr. 4

START LISTENING AT 0:18

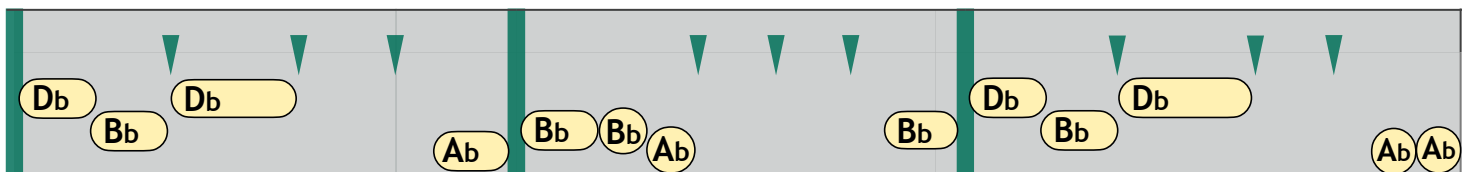


0:18

Your butt is mine \_\_

.....

...



.....

.....

I'm tel - lin' you \_\_

ba-by

10 pts

7. Which of these melodic traits is found in the following melody. ( Answer "yes" or "no" for each trait )

☐

Dramatic leaps

☐

Small number of pitches

☐

Ascending contour

☐

Wide melodic range

Overall, is this melody weak or strong ?

**"Sunny Came Home" - Shawn Colvin - 1997**

D major



Tr. 5

START LISTENING AT **0:51**

days go \_\_\_\_\_ by \_\_\_\_\_ I'm \_\_\_\_\_ .....

**0:51 CHORUS**

..... on \_\_\_\_\_ a \_\_\_\_\_ wire \_\_\_\_\_

10 pts

8. Which of these melodic traits is found in the following melody. ( Answer "yes" or "no" for each trait )

- ☐ Wide melodic range
- ☐ Dramatic leaps
- ☐ Flat contour
- ☐ Small number of pitches

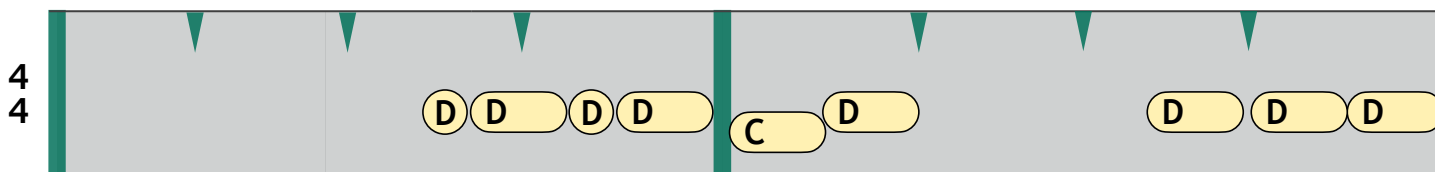
Overall, is this melody weak or strong ?

**"Obsession" – Animation – 1985**

D blues

Tr. 6

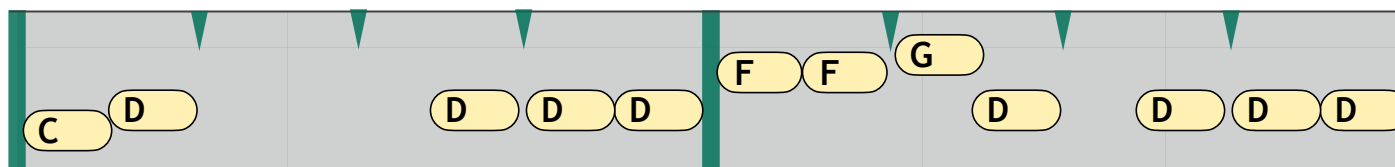
START LISTENING AT 1:05



1:05 CHORUS

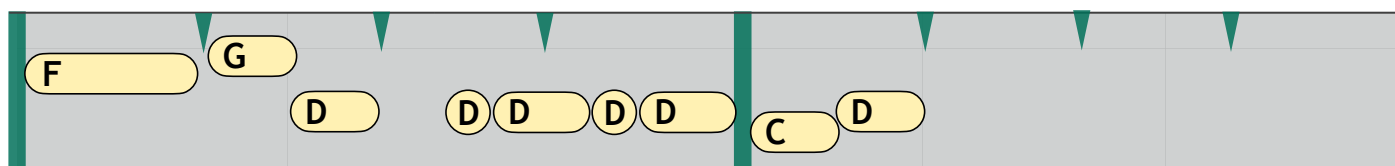
*You are an ob - ses - sion*

*you're my ob -*



*ses - sion*

.....



.....







*You are an ob - ses - sion*

**etc** .....



12 pts

9. Without the aid of a printed score (as in the previous questions), listen to the vocal melodies in the following songs and label them as either weak or strong.

				weak or strong ?
 Tr. 7	"Jailhouse Rock"	Elvis Presley	1957	<input type="text"/>
 Tr. 8	"Both Sides Now"	Judy Collins	1968	<input type="text"/>
 Tr. 9	"Close To You"	Stevie Ray Vaughan	1991	<input type="text"/>
 Tr. 10	"What Is Hip"	Tower of Power	1973	<input type="text"/>
 Tr. 11	"Stay the Night"	Zedd feat. Hayley Williams	2013	<input type="text"/>
 Tr. 12	"Yesterday"	The Beatles	1965	<input type="text"/>

12 pts

10. Listen to the following song STARTING AT **0:23** and answer these 3 questions:

— Which measure has the most tension? Write bar number (ignore repeats)

— Which of the following devices was used to create a strong focal point ?  
( Answer "yes" or "no" for each device )

☐

V to I resolution

☐

Contrast in contour

☐

Drum fill

☐

Uplifting modulation

☐

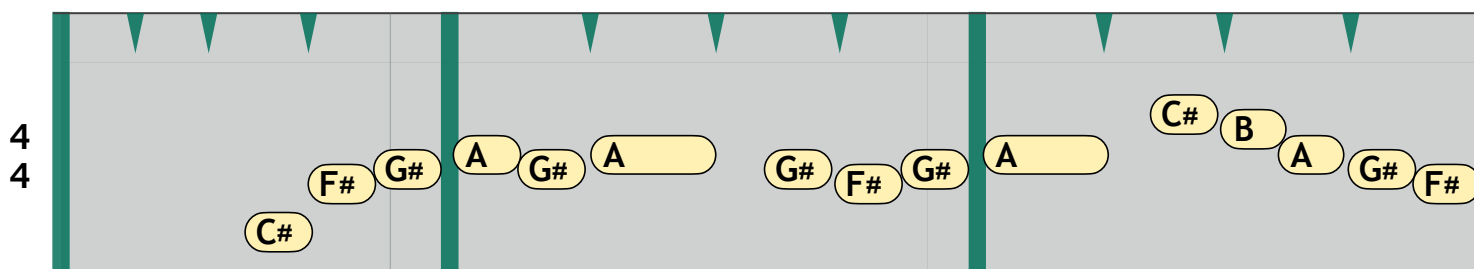
Highest melody note starts the chorus

# "Happy Together" — The Turtles — 1967

ver - F# minor,  
chor - F# mixo

Tr. 13

F#m

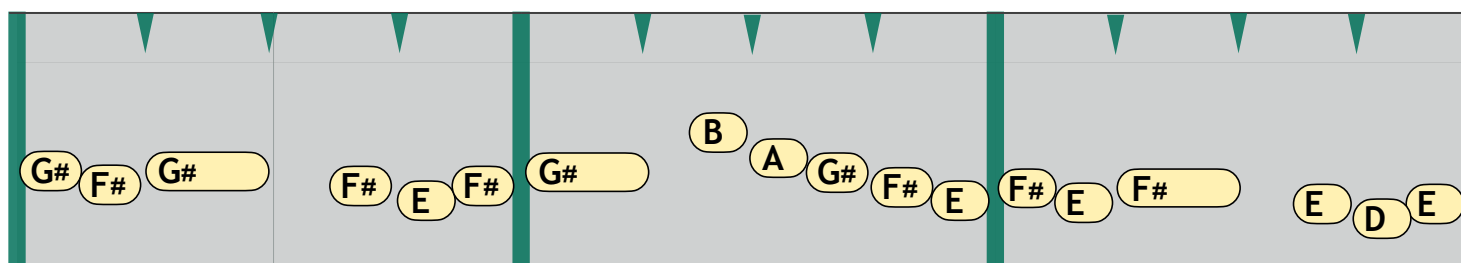


0:23

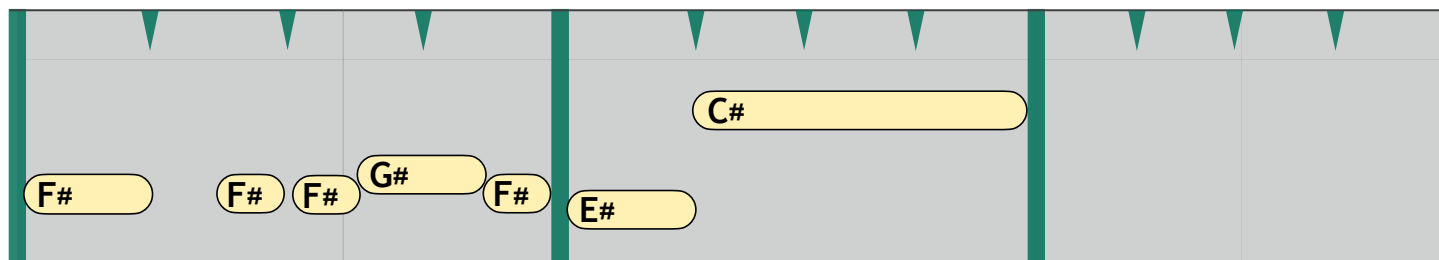
If I should call you up .....

E

D



C#

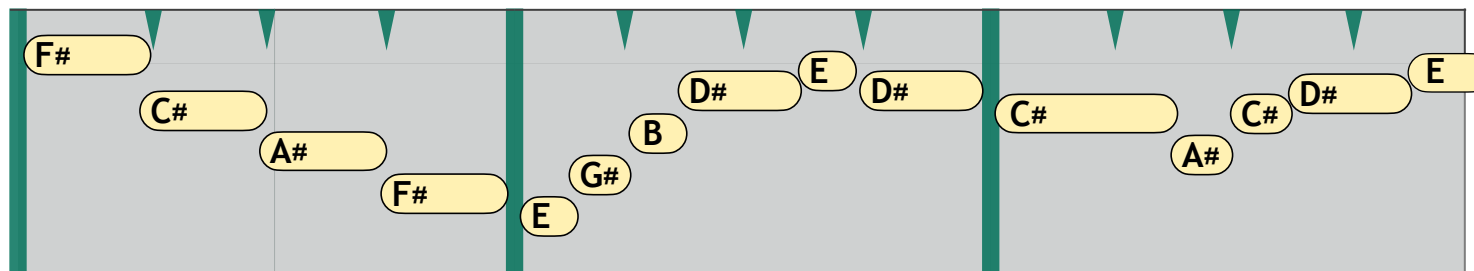


..... so hap - py \_\_\_\_ to - geth - er \_\_\_\_\_

F#

C#m7

F#



I can't see me .....