

# Answer Key

## Chapter 13 QUIZ

The quiz is broken down into two parts that can be graded separately -

1. The MAIN QUIZ with 100 total points, and
2. An optional EAR TRAINING SECTION with 100 additional points.

If you choose to include the Ear Training, just decide what percent of the overall quiz grade the additional Ear Training Questions should be (weight as a group) vs. the rest of the quiz (weight as a group).

---

### QUIZ INSTRUCTIONS TO STUDENTS -

For answers that require names of notes (letters) or scale degrees (numbers), use the symbols “ # ” or “ b ” when necessary, NOT the words "sharp" or "flat."

**10.5 pts**

1. SCALE REVIEW - Spell the following scales. Use one dash between each note name and include the tonic (starting) note again at the end.

( For example: G-A-B-C-D-E-F#-G ).

**A major**

**A mixolydian**

**E<sup>b</sup> major**

**E<sup>b</sup> mixolydian**

**B major**

**B minor**

7 pts

2. TRIADS REVIEW - Write in the diatonic triads for the following major keys. Use letter names, not roman numerals. Place the chords in ascending order.

Key of F MAJOR

--	--	--	--	--	--	--

10.5 pts

3. TRIADS REVIEW - Write in the diatonic triads for the following minor keys. Use letter names, not roman numerals. Place the chords in ascending order.

Key of B MINOR

--	--	--	--	--	--	--

Key of E MINOR

--	--	--	--	--	--	--

10.5 pts

4. 7th CHORDS REVIEW - Write in the diatonic 7ths for the following major keys ( use letter names )

Key of D MAJOR

--	--	--	--	--	--	--

Key of E MAJOR

--	--	--	--	--	--	--

9 pts

5. Write in the modal interchange chords for the following major keys.

KEY	b III <sup>maj7</sup>	IV <sup>m</sup>	b VI <sup>maj7</sup>	b VII <sup>7</sup>
A	<input type="text"/>	<input type="text"/>	<input type="text"/>	<input type="text"/>
E	<input type="text"/>	<input type="text"/>	<input type="text"/>	<input type="text"/>
G	<input type="text"/>	<input type="text"/>	<input type="text"/>	<input type="text"/>

3 pts

6. When in a major key, name one modal interchange chord mentioned in Chapter 13 that is sometimes borrowed from the parallel mixolydian key. (Answer in roman numerals )

answer could also be V<sup>m</sup> or V<sup>m7</sup>

3 pts

7. When in a minor key, which chord mentioned in Chapter 13 is sometimes borrowed from parallel dorian ? (Answer in roman numerals.)

3.75

8. Fill in the letter-name symbols for the following 4-chord sequence from “Creep.” ( Key is G major )

Which chord is a modal interchange chord ? (Answer with letter name symbol).

**“Creep” — Radiohead — 1993**

**KEY - G major**

I	( V / V <sup>m</sup> )	IV	IV <sup>m</sup>
<input type="text"/>	<input type="text"/>	<input type="text"/>	<input type="text"/>

5.25 pts

9. Fill in the letter-name symbols for the following 6-chord sequence from “Anything But Ordinary.” ( Key is C major )

Which chord is a modal interchange chord ? (Answer with letter name symbol).

***“Anything But Ordinary” — Avril Lavigne — 2002***

KEY - C major

I

V / 3

VI<sub>m</sub>

V<sub>m</sub>

IV

VI<sub>m</sub>

6.75 pts

10. Fill in the letter-name symbols for the following 8-chord sequence from “Hotel California.” ( Key is B minor )

Which chord is a modal interchange chord ? (Answer with letter name symbol).

***“Hotel California” — Eagles — 1977***

KEY - B minor

I<sub>m</sub>

V<sub>7</sub>

bVII

IV

bVI

bIII

IV<sub>m</sub>

V<sub>7</sub>

6 pts

11. Fill in the letter-name symbols for the following 7-chord sequence from “Pineapple Head.” ( Key is F major )

Which chords are modal interchange chords ? (Answer with letter name symbols and put one dash between each chord).

***“Pineapple Head” — Crowded House — 1993***

KEY - F major

I

bVI

II<sub>m7b5</sub>

IV

I

bIII<sub>maj7</sub>

V7

4.5 pts

12. Fill in the roman numerals for the following 5-chord sequence from “Show Me the Way.” ( Key is D major )

Which chords are modal interchange chords ? (Answer with roman numerals and put one dash between each chord).

***“Show Me the Way” — Peter Frampton — 1976***

KEY - D major

D

D<sub>maj7</sub>

B<sub>m</sub>

B<sub>b</sub>

C

3.75 pts

13. Fill in the roman numerals for the following 4-chord sequence from “I Want You, I Need You, I Love You.” ( Key is C major )

Which chord is a modal interchange chord ? (Answer with roman numerals).

**"I Want You I Need You I Love You" - Elvis Presley - 1956**

KEY - C major

C	C7	F	Fm
<input type="text"/>	<input type="text"/>	<input type="text"/>	<input type="text"/>

5.25 pts

14. Fill in the roman numerals for the following 6-chord sequence from "Save the Best for Last." ( Key is Eb major )

Which chords are modal interchange chords ? (Answer with roman numerals and put one dash between each chord).

**"Save the Best for Last" - Vanessa Williams - 1992**

KEY - Eb major

Eb	Bbm	Ab/C	Db	Ab/C	Bb
<input type="text"/>	<input type="text"/>	<input type="text"/>	<input type="text"/>	<input type="text"/>	<input type="text"/>

11.25

15. Listen to the following song STARTING AT **0:13** and answer these 2 questions:

— Which measure has the most tension? Write bar number (ignore repeats)

— Which of the following devices was used to create a strong focal point ?  
( Answer "yes" or "no" for each device )



V to I resolution



Extended section with an extra odd-numbered bar



Harmonic rhythm (chord changes) temporarily suspended



Avoidance of the I chord

For AUDIO, listen to the Ch. 13 Quiz Playlist, track 1. To navigate within the audio track, first click on the song title, then slide the progress bar forward to the desired starting point.

**"Rock n' Roll All Nite" — Kiss — 1975**

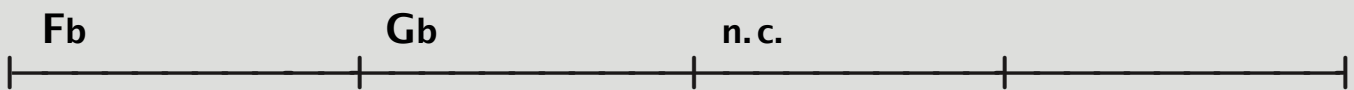
KEY - Ab major

 Tr. 1

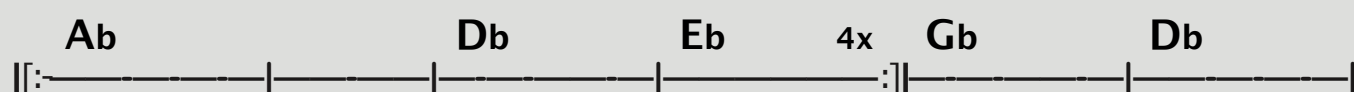
$\frac{4}{4}$



0:13 VERSE



0:40 PRE-CHORUS



0:46 CHORUS

## OPTIONAL EAR TRAINING QUESTIONS –

Listen to the following ear training questions and write in the chord names (either roman numerals or letters) as you hear them. These questions are in the same format as the Chapter 13 ear training exercises, with the **key note played four times before each chord progression starts**.

20 pts

 **E.T. 1** (key of C major)

chord 1	ch 2	ch 3	ch 4
<input type="text"/>	<input type="text"/>	<input type="text"/>	<input type="text"/>

ch 5	ch 6	ch 7	ch 8
<input type="text"/>	<input type="text"/>	<input type="text"/>	<input type="text"/>

17.5 pts

 **E.T. 2** (key of C major)

chord 1	ch 2	ch 3	ch 4	ch 5	ch 6	ch 7
<input type="text"/>	<input type="text"/>	<input type="text"/>	<input type="text"/>	<input type="text"/>	<input type="text"/>	<input type="text"/>

20 pts

 **E.T. 3** (key of C major)

chord 1	ch 2	ch 3	ch 4
<input type="text"/>	<input type="text"/>	<input type="text"/>	<input type="text"/>

ch 5	ch 6	ch 7	ch 8
<input type="text"/>	<input type="text"/>	<input type="text"/>	<input type="text"/>



22.5 pts

🔊 E.T. 4 (key of C major)

chord 1	ch 2	ch 3	ch 4	ch 5
<input type="text"/>	<input type="text"/>	<input type="text"/>	<input type="text"/>	<input type="text"/>

ch 6	ch 7	ch 8	ch 9
<input type="text"/>	<input type="text"/>	<input type="text"/>	<input type="text"/>

20 pts

🔊 E.T. 5 (key of A minor)

chord 1	ch 2	ch 3	ch 4
<input type="text"/>	<input type="text"/>	<input type="text"/>	<input type="text"/>

ch 5	ch 6	ch 7	ch 8
<input type="text"/>	<input type="text"/>	<input type="text"/>	<input type="text"/>